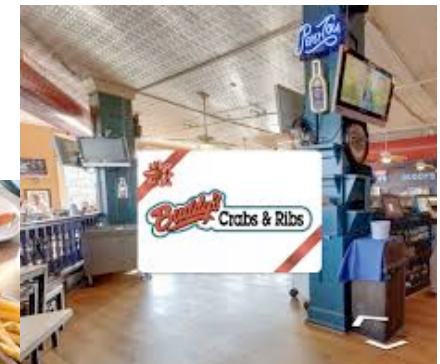




Excursion to Annapolis

Wednesday, August 7, 2019





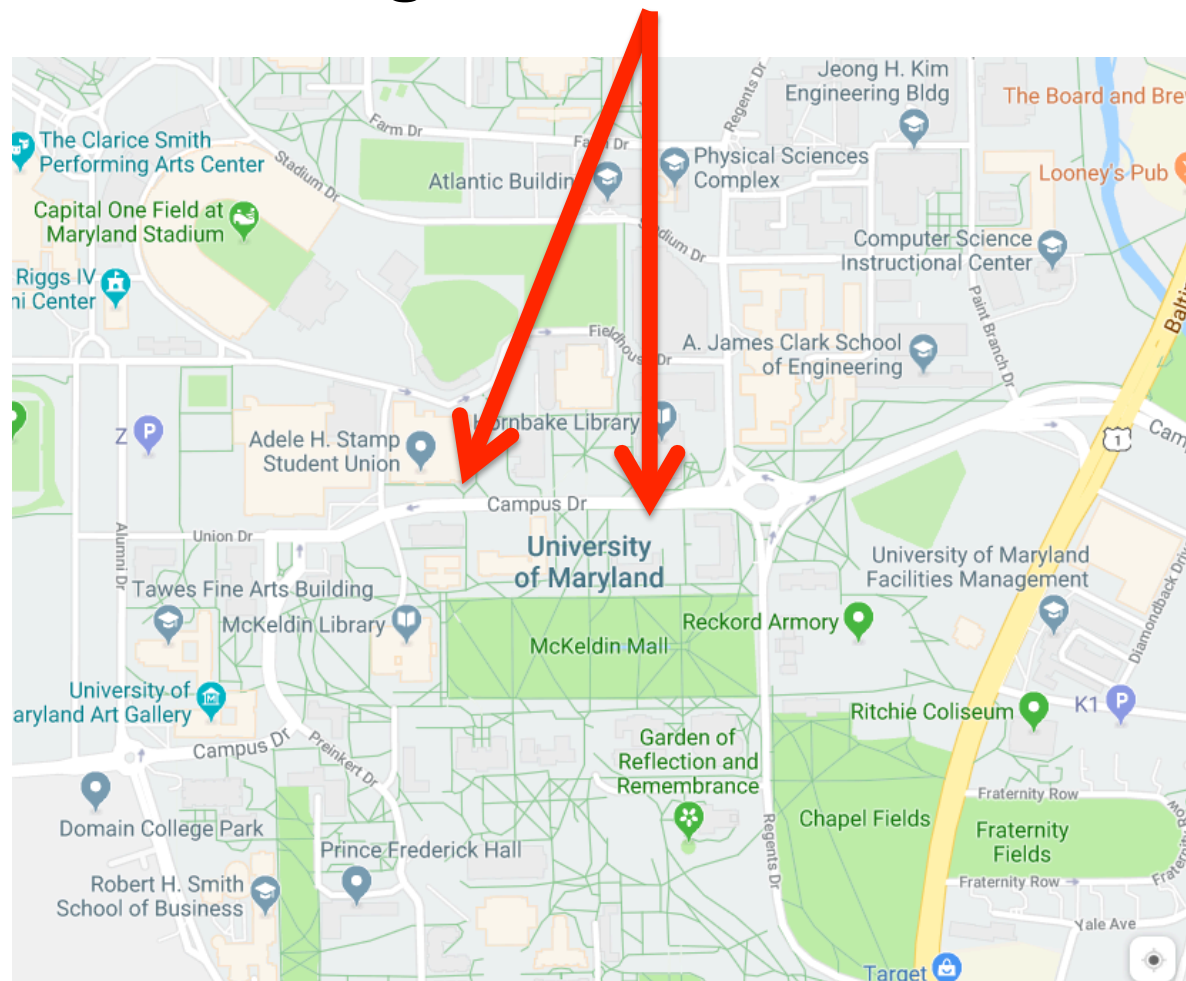
Excursion Details

- Coach buses will provide transportation for attendees to and from Annapolis.
- Buses will be parked in the bus slip in front of the Stamp Student Union, across Campus Drive and up the hill from the symposium lecture hall (Edward St. John Center).
- Buses will begin boarding at 2:15 pm and will depart at 2:30 pm. Make sure that you are back from lunch in time and if you are bringing a guest that your guest meets you prior to 2:15 at the lecture hall or at the buses at 2:15.
- We will set sail on the 74-foot *Woodwind* and *Woodwind II* schooners at 4pm. The crew will bring us back to the Annapolis City Dock at 6pm.
- Chips, salsa, and guacamole along with bottled water and soft drinks will be provided on the ship.
- See conference organizers before boarding the buses or boats if you are in need of a seasickness pill, however the excursion is in protected waters.
- The sailing takes place rain or shine, unless severe weather warnings are in place. Please wear boat appropriate, **soft-soled shoes** and bring weather appropriate clothing (rain jacket, sweatshirt, sunglasses, etc.) depending on the local Annapolis forecast.
- You are free to walk around the Annapolis waterfront from 6-6:45 pm.
- Our group will be seated for dinner at Buddy's Crabs & Ribs at 6:45 pm. Dietary restrictions have been noted and will be accommodated. Please tell your server if this applies to you.
- The buses will leave Annapolis at 9 pm to return to College Park.

Excursion Bus Slip & Edward St. John Center

Campus Drive

College Park, MD 20742



Buddy's Crabs & Ribs
100 Main St.
Annapolis, MD 21401

Woodwind Schooner Dock
80 Compromise St.
Annapolis, MD 21401

